

Ikegami®

CMF-1580 15" FLAT CRT

CMF-2180 21" FLAT CRT



- **15"/21" CRT, 0.66/0,75 mm strip pitch, 90° deflection**
- **360/450 TV lines of horizontal resolution**
- **4 Video-Input**
1 Video VCR-Input
1 Video Output (Loop)
- **Audio Input / Output by RCA-Plug**
- **1.5 W speaker output**
- **World wide multiple system (NTSC/PAL)**
- **Automatic 75 Ω termination**
- **Metal cabinet**
- **OSD-Menu control (On screen display)**

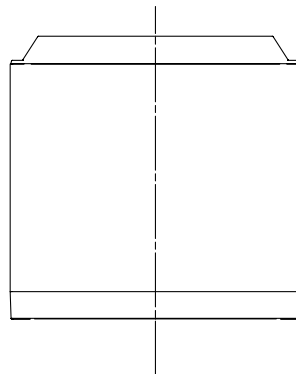
Giving new value to images

CMF-1580/CMF-2180 Color Monitor

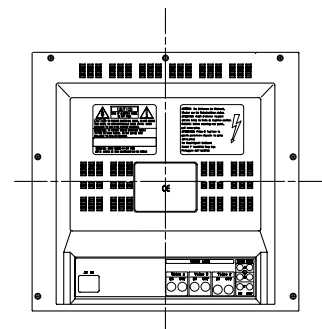
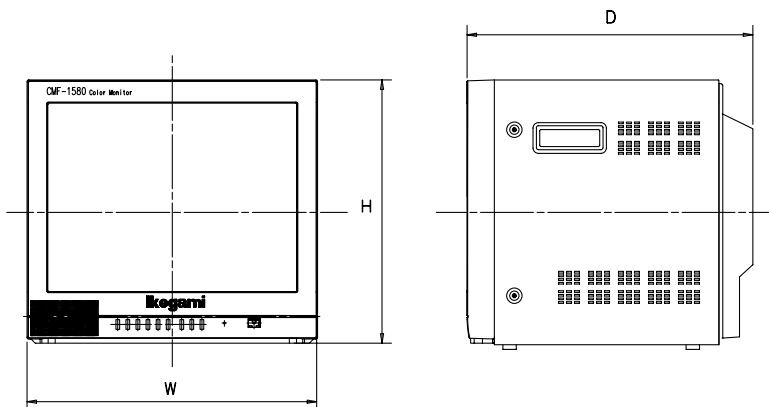
Specifications

System	CMF-1580 (NTSC/PAL)	CMF-2180 (NTSC/PAL)
CRT	15" diagonal, 0.6 mm stripe pitch, 90° deflection	21" diagonal, 0.75 mm stripe pitch, 90° deflection
Video In/Out	4 Channel Input / 1 Channel Output (Loop) 1 Video-VCR Input (1.0 Vp-p BNC jack)	4 Channel Input / 1 Channel Output (Loop) 1 Video-VCR Input (1.0 Vp-p BNC jack)
Audio In/Out	4 Channel Input / 1 Channel Output VCR Input RCA jack	4 Channel Input / 1 Channel Output VCR Input RCA jack
Power Source	AC 230 V/50 Hz	AC 230 V/50 Hz
Power Consumption	50 W	60 W
Dimensions (W x D x H)	365 mm x 391 mm x 342 mm (without packing)	490 mm x 380 mm x 444,5 mm (without packing)
Weight	about 16.5 kg (with packing)	about 31 kg (with packing)
Resolution	360 TV lines	450 TV lines
Video System	Multiple system (NTSC/PAL)	Multiple system (NTSC/PAL)
Horizontal Stabilization	Pull in Range ± 500 Hz Holding Range ± 500 Hz	Pull in Range ± 500 Hz Holding Range ± 500 Hz
Vertical Stabilization	Pull in Range ± 4 Hz Holding Range ± 4 Hz	Pull in Range ± 4 Hz Holding Range ± 4 Hz
Sub Carrier Stabilization	Pull in Range ± 400 Hz Holding Range ± 400 Hz	Pull in Range ± 400 Hz Holding Range ± 400 Hz
Audio	1.5 Watts	1.5 Watts
Convergence	Less than 0.4 mm max (Center)	Less than 0.4 mm max (Center)
Overscan	10%	10%
Operating Temperature	0 °C ~ +40 °C	0 °C ~ +40 °C
Operating Humidity	10 ~ 90% (Non-condensing)	10 ~ 90% (Non-condensing)

Drawings CMF-1580 CMF-2180



	CMF-1580	CMF-2180
W	365 mm	490 mm
D	391 mm	380 mm
H	342 mm	444,5 mm



Ikegami Electronics (Europe) GmbH

Ikegamistr. 1, D-41460 Neuss, Germany
Phone: +49-(0)2131-123-0, Fax: +49-(0)2131-102820, E-Mail: info@ikegami.de, Web: www.ikegami.de

Ikegami Electronics UK

Unit E1, Cologne Court, Brooklands Close, Sunbury on Thames, Middlesex TW16 7EB, UK
Phone: +44-(0)1932-769700, Fax: +44-(0)1932-769710, E-Mail: sales@ikegami.co.uk, Web: www.ikegami.co.uk

Ikegami Electronics, Denmark Office

Frederikssundsvej 266, 2700 Broenshoej, Denmark
Phone: +45-3880 9903, Fax: +45-3881 9903, E-Mail: support@ikegami.dk, Web: www.ikegami.dk

25259-PP-1.04-0000